



Valves

Valves

VALVOLE A SFERA IN OTTONE PASSAGGIO STANDARD ISO 228/1 E PASSAGGIO TOTALE ISO 7/1 ► BRASS BALL VALVES STANDARD FLOW ISO 228/1 AND FULL FLOW ISO 7/1 ► ROBINETS A BOISSEAU SPHERIQUE EN LAITON PASSAGE STANDARD ISO 228/1 ET PASSAGE TOTAL ISO 7/1 ► VALVULAS ESFERA DE LATON PASAJE STANDARD ISO 228/1 Y PASAJE TOTAL ISO 7/1

100

FEMMINA/FEMMINA, LEVA ACCIAIO ► FEMALE/FEMALE, STEEL HANDLE
FEMELLE/FEMELLE, LEVIER EN ACIER ► HEMBRA/HEMBRA, PALANCA ACERO



SIZE	PACKING
1/2"	200
3/4"	140
1"	100
1.1/4"	40
1.1/2"	30
2"	20

105

FEMMINA/FEMMINA, LEVA FARFALLA ► FEMALE/FEMALE, "T" HANDLE
FEMELLE/FEMELLE, LEVIER A "T" ► HEMBRA/HEMBRA, PALANCA MARIPOSA



SIZE	PACKING
1/2"	240
3/4"	200
1"	100

110

MASCHIO/FEMMINA, LEVA ACCIAIO ► MALE/FEMALE, STEEL HANDLE
MALE/FEMELLE, LEVIER EN ACIER ► MACHO/HEMBRA, PALANCA ACERO



SIZE	PACKING
1/2"	200
3/4"	140
1"	80
1.1/4"	40
1.1/2"	30
2"	20

115

MASCHIO/FEMMINA, LEVA FARFALLA ► MALE/FEMALE, "T" HANDLE
MALE/FEMELLE, LEVIER A "T" ► MACHO/HEMBRA, PALANCA MARIPOSA



SIZE	PACKING
1/2"	240
3/4"	200
1"	100

201

FEMMINA/FEMMINA, LEVA ACCIAIO ► FEMALE/FEMALE, STEEL HANDLE
FEMELLE/FEMELLE, LEVIER EN ACIER ► HEMBRA/HEMBRA, PALANCA ACERO



SIZE	PACKING
1/2"	140
3/4"	120
1"	60
1.1/4"	40
1.1/2"	20
2"	10
2.1/2"	12
3"	6
4"	3

202

FEMMINA/FEMMINA, LEVA FARFALLA ► FEMALE/FEMALE, "T" HANDLE
FEMELLE/FEMELLE, LEVIER A "T" ► HEMBRA/HEMBRA, PALANCA MARIPOSA



SIZE	PACKING
1/2"	200
3/4"	120
1"	60

203

FEMMINA/FEMMINA, LEVA ACCIAIO ► FEMALE/FEMALE, STEEL HANDLE
FEMELLE/FEMELLE, LEVIER EN ACIER ► HEMBRA/HEMBRA, PALANCA ACERO



SIZE	PACKING
1/1/2"	140
3/4"	120
1"	60
1.1/4"	40
1.1/2"	20
2"	10

204

FEMMINA/FEMMINA, LEVA FARFALLA ► FEMALE/FEMALE, "T" HANDLE
FEMELLE/FEMELLE, LEVIER A "T" ► HEMBRA/HEMBRA, PALANCA MARIPOSA



SIZE	PACKING
1/2"	200
3/4"	120
1"	60

VALVES

VALVOLE A SFERA IN OTTONE PASSAGGIO TOTALE ▶ BRASS BALL VALVES FULL FLOW
ROBINETS A BOISSEAU SPHERIQUE EN LAITON PASSAGE TOTAL ▶ VALVULAS ESFERA DE LATON PASAJE TOTAL

220

MASCHIO/MASCHIO, LEVA ACCIAIO ▶ MALE/MALE, STEEL HANDLE
MALE/MALE, LEVIER EN ACIER ▶ MACHO/MACHO, PALANCA ACERO



SIZE	PACKING
1/2"	200
3/4"	140
1"	60

225

MASCHIO/MASCHIO, LEVA FARFALLA ▶ MALE/MALE, "T" HANDLE
MALE/MALE, LEVIER A "T" ▶ MACHO/MACHO, PALANCA MARIPOSA



SIZE	PACKING
1/2"	200
3/4"	140
1"	60

230

FEMMINA/BOCCHETTONE, LEVA FARFALLA ▶ FEMALE/FITTING, "T" HANDLE
FEMELLE/RACCORD, LEVIER A "T" ▶ HEMBRA/EMPALME, PALANCA MARIPOSA



SIZE	PACKING
1/2"	140
3/4"	100
1"	60
1.1/4"	20

250

VALVOLA ANGOLO, FEMMINA/BOCCHETTONE PER COLLETTORI ▶ ANGLE
VALVE, FEMALE/MANIFOLD FITTING ▶ ROBINET EQUERRE, FEMELLE/RACCORD
POUR COLLECTEUR ▶ VALVULA ANGULAR, HEMBRA/RACOR MACHO



SIZE	PACKING
1/2"	140
3/4"	80
1"	40

235

FEMMINA/FEMMINA, CON RUBINETTO SPURGO E TAPPO ▶ FEMALE/FEMALE,
WITH DRAIN COCK ▶ FEMELLE/FEMELLE, AVEC PURGEUR ▶ HEMBRA/HEMBRA,
CON LLAVE DE PURGA



SIZE	PACKING
1/2"	140
3/4"	100
1"	40
1.1/4"	40
1.1/2"	20
2"	20

705

VALVOLA INCASSO FEMMINA/FEMMINA, LEVA CROMATA ▶ BUILT IN BALL
VALVE FEMALE/FEMALE, CHROME PLATED HANDLE ▶ ROBINET ENCASTRABLE
FEMELLE/FEMELLE, LEVIER CHROME ▶ VALVULA A EMPOTRAR
HEMBRA/HEMBRA, PALANCA CROMADA



SIZE	PACKING
1/2"	60
3/4"	50

710

VALVOLA INCASSO FEMMINA/FEMMINA, CAPPUCCHIO CROMATO ▶ BUILT IN
BALL VALVE FEMALE/FEMALE, CHROME PLATED CAP ▶ ROBINET ENCASTRABLE
FEMELLE/FEMELLE, CAPUCHON CHROME ▶ VALVULA A EMPOTRAR
HEMBRA/HEMBRA, CASQUILLO CROMADO



SIZE	PACKING
1/2"	60
3/4"	50

715

VALVOLA INCASSO FEMMINA/FEMMINA, MANIGLIA CROMATA ▶ BUILT IN BALL
VALVE FEMALE/FEMALE, CHROME PLATED HANDLE ▶ ROBINET ENCASTRABLE
FEMELLE/FEMELLE, LEVIER CHROME ▶ VALVULA A EMPOTRAR HEMBRA/HEM-
BRA, MANIJA CROMADA



SIZE	PACKING
1/2"	60
3/4"	50

Valves

VALVOLA A SFERA PER CONTATORI ACQUA - SARACINESCHE ► WATER METER BALL VALVES - GATE VALVES
ROBINETA A BOISSEAU SPHERIQUE POUR CONTEUR - VANNES ► VALVULAS ESFERA POR CONTADOR DE AGUA - VALVULAS COMPUERTAS

900

VALVOLA A SFERA DRIITA CON FILTRO, FEMMINA/DADO MOBILE, LEVA ACCIAIO ► STRAIGHT BALL VALVE WITH FILTER, FEMALE/SWIVEL NUT, STEEL HANDLE ► ROBINET DROIT AVEC FILTRE, FEMELLE/ECROU TOURNANT, LEVIER EN ACIER ► VALVULA ESFERA RECTA CON FILTRO, HEMBRA/TUERCA MOVIL, PALANCA ACERO



SIZE PACKING

1/2"x3/4"	40
1/2"x7/8"	40
3/4"x3/4"	40
3/4"x7/8"	40
3/4"x1"	40
1"x1"	40

905

VALVOLA A SFERA DRIITA CON FILTRO, FEMMINA/DADO MOBILE, MANIGLIA "T" ► STRAIGHT BALL VALVE WITH FILTER, FEMALE/SWIVEL NUT, "T" HANDLE ► ROBINET DROIT AVEC FILTRE, FEMELLE/ECROU TOURNANT, LEVIER A "T" ► VALVULA ESFERA RECTA CON FILTRO, HEMBRA/TUERCA MOVIL, PALANCA MARIPOSA



SIZE PACKING

1/2"x3/4"	40
1/2"x7/8"	40
3/4"x3/4"	40
3/4"x7/8"	40
3/4"x1"	40
1"x1"	40

910

VALVOLA A SFERA DRIITA CON FILTRO, FEMMINA/FEMMINA, LEVA ACCIAIO ► STRAIGHT BALL VALVE WITH FILTER, FEMALE/FEMALE, STEEL HANDLE ► ROBINET DROIT AVEC FILTRE, FEMELLE/FEMELLE, LEVIER EN ACIER ► VALVULA ESFERA RECTA CON FILTRO, HEMBRA/HEMBRA, PALANCA ACERO



SIZE PACKING

1/2"x3/4"	60
1/2"x7/8"	60
3/4"x3/4"	50
3/4"x7/8"	50
3/4"x1"	40
1"x1"	40

915

VALVOLA A SFERA DRIITA CON FILTRO, FEMMINA/FEMMINA, MANIGLIA "T" ► STRAIGHT BALL VALVE WITH FILTER, FEMALE/FEMALE, "T" HANDLE ► ROBINET DROIT AVEC FILTRE, FEMELLE/FEMELLE, LEVIER A "T" ► VALVULA ESFERA RECTA CON FILTRO, HEMBRA/HEMBRA, PALANCA MARIPOSA



SIZE PACKING

1/2"x3/4"	60
1/2"x7/8"	60
3/4"x3/4"	50
3/4"x7/8"	50
3/4"x1"	40
1"x1"	40

500

SARACINESCA IN OTTONE STAMPATO TIPO NORMALE PN 16 ► HOTPRESSED BRASS GATE VALVE, NORMAL TYPE PN 16 ► VANNE EN LAITON MATRICE, TYPE NORMAL PN 16 ► VALVULA COMPUERTA EN LATON, TIPO ESTANDARD PN 16



SIZE PACKING

1/2"	180
3/4"	120
1"	80
1.1/4"	60
1.1/2"	35
2"	25
2.1/2"	16
3"	12
4"	6
5"	1
6"	1

505

SARACINESCA IN OTTONE STAMPATO TIPO LEGGERO PN 10 ► HOTPRESSED BRASS GATE VALVE, LIGHT TYPE PN 10 ► VANNE EN LAITON MATRICE, TYPE LEGERE PN 10 ► VALVULA COMPUERTA EN LATON, TIPO LIVIANO PN 10



SIZE PACKING

1/2"	200
3/4"	200
1"	120
1.1/4"	80
1.1/2"	60
2"	35
2.1/2"	18
3"	12
4"	10

510

RACCOLTITORE DI IMPURITA' IN OTTONE CON FILTRO INOX 600 MICRON ► BRASS FILTER WITH 600 MICRON STAINLESS STEEL CARTRIDGE ► FILTRE EN LAITON AVEC NET DE 600 MICRON EN ACIER INOX ► FILTRO DE LATON CON CARTUCHO DE 600 MICRON EN ACERO INOX



SIZE PACKING

1/2"	200
3/4"	200
1"	120
1.1/4"	100
1.1/2"	30
2"	20
2.1/2" *	15
3" *	10
4" *	4

* BODY MADE IN BRONZE

515

VALVOLA A CLAPET IN OTTONE STAMPATO, SEDE METALLICA ► HOTPRESSED BRASS SWING CHECK VALVE, METAL SEAT ► CLAPET DE RETENUE A BATTANT EN LAITON MATRICE, SIEGE EN METAL ► VALVULA DE CLAPET DE LATON ESTAMPADO, ASIENTO METALICO



SIZE PACKING

1/2"	200
3/4"	200
1"	100
1.1/4"	60
1.1/2"	40
2"	20
2.1/2"	10
3"	10
4"	10

VALVES

VALVOLE DI RITEGNO - RIDUTTORI ▶ CHECK VALVES - REDUCERS
CLAPETS DE RETENUE - REDUCTORS ▶ VALVULAS DE RETENCION - REDUCTORES

520

VALVOLA DI RITEGNO A MOLLA CON INSERTO IN PLASTICA ▶ SPRING CHECK VALVE WITH PLASTIC INSERT ▶ CLAPET DE RETENUE AVEC RESORT ▶ VALVULA DE RETENCION CON INSERTO EN PLASTICO



SIZE	PACKING
1/2"	400
3/4"	250
1"	150
1.1/4"	90
1.1/2"	60
2"	30
2.1/2"	15
3"	15
4"	6

525

VALVOLA DI FONDO A MOLLA CON FILTRO INOX 1000 MICRON ▶ FOOT CALVE WITH 1000 MICRON FILTER ▶ CLAPET DE PIED AVEC FILTRE EN ACIER 1000 MICRON ▶ VALVULA DE RETENCION FILTRO EN ACERO INOX 1000 MICRON



SIZE	PACKING
1/2"	200
3/4"	100
1"	100
1.1/4"	40
1.1/2"	20
2"	20

530

VALVOLA DI FONDO IN OTTONE STAMPATO ▶ HOTPRESSED BRASS FOOT VALVE CLAPET DE PIED EN LAITON MATRICE ▶ VALVULA DE FONDO EN LATON ESTAMPADO



SIZE	PACKING
3/4"	150
1"	120
1.1/4"	60
1.1/2"	40
2"	20
2.1/2"	18
3"	12
4"	5

535

VALVOLA DI FONDO TUBOLARE, TENUTA GOMMA ▶ BRASS FOOT VALVE, RUBBER SEAT ▶ CLAPET DE PIED, SIEGE EN CAOUTCHOUC ▶ VALVULA DE FONDO TUBOLAR, ASIEN TO DE GOMA



SIZE	PACKING
3/4"	200
1"	100
1.1/4"	70
1.1/2"	40
2"	20
2.1/2"	15
3"	10
4"	3

545

RIDUTTORE DI PRESSIONE FEMMINA/FEMMINA ▶ PRESSURE REDUCER FEMALE/FEMALE ▶ REDUCTEUR DE PRESSION FEMELLE/FEMELLE ▶ REDUCTOR DE PRESION HEMBRA/HEMBRA



SIZE	PACKING
1/2"	80
3/4"	80
1"	20
1.1/4"	20
1.1/2"	20
2"	20

555

FILTRO DI LINEA PER ACQUA 800µ ▶ IN LINE FILTER FOR WATER 800µ STAINLESS STEEL NET ▶ FILTRE DE LIGNE POUR EAU, NET ACIER INOX 800µ ▶ FILTRO PARA AGUA, CARTUCHO DE ACERO INOX 800µ



SIZE	PACKING
1/2"	100
3/4"	100
1"	60
1.1/4"	30
1.1/2"	20
2"	20
2.1/2"	10
3"	8
4"	6

560

FILTRO AUTOPULENTE GRADO FILTRAZIONE 100µ ▶ SELF-CLEANING FILTER, 100µ STAINLESS STEEL NET ▶ FILTRE AUTO-NETTOYANT, NET ACIER INOX 100µ ▶ FILTRO AUTOLIMPIANTE, CARTUCHO DE ACERO INOX 100µ



SIZE	PACKING
1/2"	50
3/4"	40
1"	20
1.1/4"	10
1.1/2"	10
2"	10
2.1/2"	1
3"	1
4"	1

570

VALVOLA SFOGO ARIA AUTOMATICA ▶ AUTOMATIC AIR VENT PURGEUR D'AIR AUTOMATIQUE A FLOTTEUR ▶ DESAIREADOR AUTOMATICO



SIZE	PACKING
1/4"	125
3/8"	125
1/2"	80
3/4"	50

Valves

RACCORDI IN OTTONE ► BRASS FITTINGS
RACCORDS EN LAITON ► RACORES EN LATON

575

VALVOLINO PER RADIATORI ANELLO TEFLON ► MANUAL AIR RELIEF VALVE
SOUPAPE D'ÉCHAPPEMENT D'AIR MANUELLE ► VALVULA PARA RADIADORES ARO TEFLON



SIZE	PACKING
1/4"	2000
3/8"	2000
1/2"	2000

5000

RACCORDO A 5 VIE PER AUTOCLAVI 82MM ► 5 WAYS CONNECTOR FOR PUMPS
82MM ► RACCORD 5 VOIES POUR POMPE 82 MM ► RACOR DE 5 VIAS PARA
BOMBAS AUTOCLAVES 82 MM



SIZE	PACKING
1"	100

590 N

RACCORDO CURVO 3 PEZZI NICHELATO ► 3 PIECES ANGLE COUPLER, NICKEL
PLATED BRASS ► RACCORD ÉQUERRE EN 3 PIECES NICKELE ► RACOR CURVO
3 PIEZAS, NIKELADO



SIZE	PACKING
1/2"	200
3/4"	150
1"	100
1.1/4"	50
1.1/2"	30
2"	20

590 Y

RACCORDO CURVO 3 PEZZI OTTONE ► 3 PIECES ANGLE COUPLER, BRASS ►
RACCORD ÉQUERRE EN 3 PIECES LAITON ► RACOR CURVO 3 PIEZAS, LATON



SIZE	PACKING
1/2"	200
3/4"	150
1"	100
1.1/4"	50
1.1/2"	30
2"	20

595 N

RACCORDO DRITTO 3 PEZZI NICHELATO ► 3 PIECES STRAIGHT UNION, NICKEL
PLATED BRASS ► RACCORD DROIT EN 3 PIECES NICKELE ► RACOR
RECTO EN 3 PIEZAS, NIKELADO



SIZE	PACKING
1/2"	500
3/4"	250
1"	120
1.1/4"	80
1.1/2"	60
2"	30

595 Y

RACCORDO DRITTO 3 PEZZI OTTONE ► 3 PIECES STRAIGHT UNION BRASS ►
RACCORD DROIT EN 3 PIECES LAITON ► RACOR RECTO EN 3 PIEZAS, LATON



SIZE	PACKING
1/2"	500
3/4"	250
1"	120
1.1/4"	80
1.1/2"	60
2"	30

MC005

PROLUNGA FILETTATA MASCHIO/FEMMINA DA BARRA CROMATA ► CHROMED
PLATED BRASS EXTENSION MALE/FEMALE ► PROLONGE EN LAITON CHROME
MALE/FEMELLE ► CONNEXION LATON CROMADO MACHO/HEMBRA



SIZE	PACKING
1/2"x10	350
1/2"x15	350
1/2"x20	250
1/2"x25	200
1/2"x30	200
1/2"x40	120
1/2"x50	120

AVAILABLE ALSO SIZES 3/8" - 3/4"

MY005

PROLUNGA FILETTATA MASCHIO/FEMMINA DA BARRA OTTONE ► BRASS
EXTENSION MALE/FEMALE ► PROLONGE EN LAITON MALE/FEMELLE ►
CONNEXION LATON MACHO/HEMBRA



SIZE	PACKING
1/2"x10	350
1/2"x15	350
1/2"x20	250
1/2"x25	200
1/2"x30	200
1/2"x40	120
1/2"x50	120

AVAILABLE ALSO SIZES 3/8" - 3/4"

MN001

RACCORDO GOMITO IN OTTONE NICHELATO ► FEMALE ELBOW, NICKEL PLATED BRASS ► RACCORD COUDE FEMELLE, LAITON NICKELE ► CODO HEMBRA, LATON NIKELADO



SIZE	PACKING
3/8"	200
1/2"	180
3/4"	80
1"	50
1.1/4"	35
1.1/2"	25
2"	12

MY001

RACCORDO GOMITO IN OTTONE ► FEMALE ELBOW BRASS ► RACCORD COUDE FEMELLE EN LAITON ► CODO LATON HEMBRA



SIZE	PACKING
3/8"	200
1/2"	180
3/4"	80
1"	50
1.1/4"	35
1.1/2"	25
2"	12

MN002

RACCORDO A "T" FEMMINA IN OTTONE NICHELATO ► FEMALE TEE, NICKEL PLATED BRASS ► TE FEMELLE, LAITON NICKELE ► TE HEMBRA, LATON NIKELADO



SIZE	PACKING
3/8"x3/8"x3/8"	150
1/2"x1/2"x1/2"	110
3/4"x1/2"x3/4"	70
3/4"x3/4"x3/4"	50
1"x1/2"x1"	45
1"x3/4"x1	40
1"x1"x1"	30
1.1/4"	25
1.1/2"	15
2"	10

MY002

RACCORDO A "T" FEMMINA IN OTTONE ► FEMALE TEE BRASS ► TE FEMELLE EN LAITON ► TE LATON HEMBRA



SIZE	PACKING
3/8"x3/8"x3/8"	150
1/2"x1/2"x1/2"	110
3/4"x1/2"x3/4"	70
3/4"x3/4"x3/4"	50
1"x1/2"x1"	45
1"x3/4"x1	40
1"x1"x1"	30
1.1/4"	25
1.1/2"	15
2"	10

MN003

RACCORDO DRITTO FEMMINA/FEMMINA IN OTTONE NICHELATO ► STRAIGHT FEMALE/FEMALE COUPLER, NICKEL PLATED BRASS ► RACCORD DROIT FEMELLE, LAITON NICKELE ► RACOR RECTO HEMBRA/HEMBRA, LATON NIKELADO



SIZE	PACKING
3/8"x3/8"	400
1/2"x3/8"	350
1/2"x1/2"	250
3/4"x1/2"	200
3/4"x3/4"	150
1"x3/4"	130
1"x1"	70
1.1/4"x1"	70
1.1/4"x1.1/4"	60
1.1/2"x1.1/2"	40
2"x2"	20

MY003

RACCORDO DRITTO FEMMINA/FEMMINA IN OTTONE ► STRAIGHT FEMALE/FEMALE COUPLER, BRASS ► RACCORD DROIT FEMELLE EN LAITON ► RACOR RECTO LATON HEMBRA/HEMBRA



SIZE	PACKING
3/8"x3/8"	400
1/2"x3/8"	350
1/2"x1/2"	250
3/4"x1/2"	200
3/4"x3/4"	150
1"x1/2"	150
1"x3/4"	130
1"x1"	70
1.1/4"x1"	70
1.1/4"x1.1/4"	60
1.1/2"x1.1/2"	40
2"x2"	20

MN004

VITE DOPPIA IN OTTONE NICHELATO ► NIPPLE, NICKEL PLATED BRASS ► MAMELON EN LAITON NICKELE ► NIPLE DOBLE LATON NIKELADO



SIZE	PACKING
3/8"x3/8"	600
1/2"x3/8"	350
1/2"x1/2"	300
3/4"x1/2"	250
3/4"x3/4"	250
1"x1/2"	180
1"x3/4"	130
1"x1"	100
1.1/4"x1"	90
1.1/4"x1.1/4"	80
1.1/2"x1.1/4"	50
1.1/2"x1.1/2"	40
2"x1.1/2"	30
2"x2"	25

MY004

VITE DOPPIA IN OTTONE ► NIPPLE BRASS ► MAMELON EN LAITON ► NIPLE DOBLE LATON



SIZE	PACKING
3/8"x3/8"	600
1/2"x3/8"	350
1/2"x1/2"	300
3/4"x1/2"	250
3/4"x3/4"	250
1"x1/2"	180
1"x3/4"	130
1"x1"	100
1.1/4"x1"	90
1.1/4"x1.1/4"	80
1.1/2"x1.1/4"	50
1.1/2"x1.1/2"	40
2"x1.1/2"	30
2"x2"	25

Valves

RUBINETTI A SFERA IN OTTONE ► BRASS BALL BIBCOCKS
 ROBINETS A BOISSEAU SPHERIQUE EN LAITON ► GRIFOS DE BOLA EN LATON

300

RUBINETTO PORTAGOMMA LUCCHETTABILE ► LOCKABLE HOSE END BALL BIBCOCK ► ROBINET PUISAGE ET ARROSAGE AVEC BLOCCAGE CADENAS ► GRIFO PORTATUBO CON BLOQUEO CANDADO



SIZE	PACKING
1/2"	120
3/4"	120

305

RUBINETTO EROGAZIONE, LEVA FARFALLA ► BIBCOCK, "T" HANDLE
 ROBINET PUISAGE, LEVIER A "T" ► GRIFO, PALANCA MARIPOSA



SIZE	PACKING
1/2"	140
3/4"	100

310

RUBINETTO EROGAZIONE, LEVA ACCIAIO ► BIBCOCK, STEEL HANDLE
 ROBINET PUISAGE, LEVIER EN ACIER ► GRIFO, PALANCA ACERO



SIZE	PACKING
1/2"	140
3/4"	100

315

RUBINETTO PORTAGOMMA, LEVA FARFALLA ► HOSE BIBCOCK, "T" HANDLE
 ROBINET PUISAGE ET ARROSAGE, LEVIER A "T" ► GRIFO, PALANCA MARIPOSA



SIZE	PACKING
3/8"	140
1/2"	140
3/4"	100
1"	60

320

RUBINETTO PORTAGOMMA, LEVA ACCIAIO ► HOSE BIBCOCK, STEEL HANDLE
 ROBINET PUISAGE ET ARROSAGE, LEVIER EN ACIER ► GRIFO, PALANCA ACERO



SIZE	PACKING
3/8"	140
1/2"	140
3/4"	100
1"	60

380

RUBINETTO PORTAGOMMA DUPLEX, LEVA ALLUMINIO ► DUPLEX HOSE BIBCOCK, ALUMINIUM HANDLE ► ROBINET PUISAGE ET ARROSAGE DUPLEX, LEVIER EN ALUMINIUM ► GRIFO PORTATUBO DUPLEX, PALANCA ALUMINIO



SIZE	PACKING
1/2"	80

345

RUBINETTO CON RIEMPIBOTTEGLIA, LEVA ALLUMINIO ► BOTTLEFILLER BIBCOCK, ALUMINIUM HANDLE ► ROBINET PUISAGE, LEVIER EN ALUMINIUM ► GRIFO PARA LLENAR BOTELLAS, PALANCA ALUMINIO



SIZE	PACKING
3/8"	140
1/2"	140
3/4"	100
1"	100

355

RUBINETTO PER BOTTI IN CEMENTO E VETRORESINA CON CONTRODADO, RONDELLA E GUARNIZIONI ► TANK HOSE BIBCOCK WITH LOCK NUT, WASHER AND GASKET ► ROBINET POUR TONNEAU AVEC CONTRE-ECROU, RONDELLE ET JOINT D'ETANCHEITE ► GRIFO PARA BARRILES Y TANQUES CON CONTRODADO, TUERCA Y GUARNICION



SIZE	PACKING
1/2"	120
3/4"	80

386

RUBINETTO EROGAZIONE A VITONE IN OTTONE LUCIDO ► POLISHED BRASS BIBCOCK
ROBINET EN LAITON POLI ► GRIFO EN LATON POLIDO



SIZE	PACKING
3/8"	100
1/2"	100
3/4"	50
1"	40

387

RUBINETTO PORTAGOMMA A VITONE IN OTTONE LUCIDO ► POLISHED BRASS HOSE BIBCOCK
ROBINET EN LAITON POLI AVEC PORTE-TUYAU ► GRIFO EN LATON POLIDO CON PORTATUBO



SIZE	PACKING
3/8"	100
1/2"	100
3/4"	50
1"	30

388

RUBINETTO EROGAZIONE A VITONE IN OTTONE SABBIAITO E CROMATO
► SAND BLASTED CHROME PLATED BRASS BIBCOCK ► ROBINET EN LAITON
SABLE ET CHROME ► GRIFO EN LATON SATINADO CROMADO



SIZE	PACKING
3/8"	100
1/2"	100
3/4"	50
1"	40

389

RUBINETTO PORTAGOMMA A VITONE IN OTTONE SABBIAITO E CROMATO
► SAND BLASTED CHROME PLATED BRASS HOSE BIBCOCK ► ROBINET EN
LAITON SABLE ET CHROME AVEC PORTE-TUYAU ► GRIFO EN LATON SATI-
NADO CROMADO CON PORTATUBO



SIZE	PACKING
3/8"	100
1/2"	100
3/4"	50
1"	30

390

RUBINETTO EROGAZIONE A VITONE IN OTTONE CROMATO LUCIDO ► POLISHED
CHROME PLATED BRASS BIBCOCK ► ROBINET EN LAITON CHROME ► GRIFO EN
LATON CROMADO



SIZE	PACKING
3/8"	100
1/2"	100
3/4"	50
1"	40

391

RUBINETTO PORTAGOMMA A VITONE IN OTTONE CROMATO LUCIDO ► POLISHED
CHROME PLATED BRASS HOSE BIBCOCK ► ROBINET EN LAITON CHROME AVEC
PORTE-TUYAU ► GRIFO EN LATON CROMADO CON PORTATUBO



SIZE	PACKING
3/8"	100
1/2"	100
3/4"	50
1"	40

330

PORTAGOMMA E GIRELLO ► HOSE CONNECTION
ARROSAGE ► PORTATUBOS



SIZE	PACKING
1/2"x3/4"	1000
3/4"x1"	500
1"x1.1/4"	250

335

RIDUZIONE CROMATA F 1/2"x3/4" M ► RING ADAPTER F 1/2"x3/4" M
REDUCCION CHROME F 1/2"x3/4" M ► REDUCCION CROMADA F 1/2"x3/4" M



SIZE	PACKING
3/4"x1/2"	2000

Valves

RUBINETTI SOTTOLAVABO E LAVATRICE ► UNDERSINK AND WASHING MACHINE VALVES

ROBINET SOUS LAVABO ET POUR MACHINE A LAVER ► GRIFOS DE DESCARGA LAVABO E PARA MAQUINA LAVADORA

415

RUBINETTO LAVATRICE A VITONE ► MALE WASHING MACHINE TAP FEMEL
► ROBINET POUR MACHINE A LAVER ► GRIFO PARA MAQUINA LAVADORA, MACHO

<u>SIZE</u>	<u>PACKING</u>
1/2"x3/4"	150



420

RUBINETTO LAVATRICE CON FILTRO ► WASHING MACHINE VALVE WITH FILTER
FEMEL/ROBINET POUR MACHINE A LAVER AVEC FILTRE ► VALVULA PARA
MAQUINA LAVADORA CON FILTRO

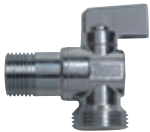
<u>SIZE</u>	<u>PACKING</u>
1/2"x3/4"	150



425

RUBINETTO LAVATRICE A SFERA ► WASHING MACHINE BALL VALVE
ROBINET POUR MACHINE A LAVER ► VALVULA PARA MAQUINA LAVADORA

<u>SIZE</u>	<u>PACKING</u>
1/2"x1/2"	250
1/2"x3/4"	250



430

RUBINETTO SOTTOLAVABO A SFERA CON FILTRO E ROSONE ► ANGLE STOP VALVE
WITH FILTER AND ROSETTE ► ROBINET SOUS LAVABO AVEC FILTRE ET ROSETTE
► VALVULA DE ESCUADRA CON FILTRO Y ROSETA

<u>SIZE</u>	<u>PACKING</u>
1/2"x3/8"	150
1/2"x1/2"	150



435

RUBINETTO SOTTOLAVABO IN OTTONE CON MANIGLIA ZAMA ► ANGLE BRASS
VALVE WITH ZAMAC HANDLE ► ROBINET SOUS LAVABO AVEC POIGNEE EN
ZAMAC ► LLAVE DE REGULACION CON MANIJA EN ZAMAC

<u>SIZE</u>	<u>PACKING</u>
1/2"	200



325

RUBINETTO LAVATRICE A SFERA CON PORTAGOMMA ► WASHING MACHINE BALL
VALVE WITH HOSE CONNECTION ► ROBINET MACHINE A LAVER AVEC PORTE
TUYAU ► VALVULA PARA MAQUINA LAVADORA CON PORTATUBO

<u>SIZE</u>	<u>PACKING</u>
1/2"	250



455

RUBINETTO SOTTOLAVABO A SFERA CON FILTRO E ROSONE ► ANGLE STOP
VALVE WITH FILTER AND ROSETTE ► ROBINET SOUS LAVABO AVEC FILTRE ET
ROSETTE ► VALVULA DE ESCUADRA CON FILTRO Y ROSETA

<u>SIZE</u>	<u>PACKING</u>
1/2"	150



475

RUBINETTO A SFERA CON ROSETTA IN OTTONE CROMATO ► ANGLE BALL VALVE
WITH CHROMED PLATED BRASS FLANGE ► ROBINET AVEC ROSETTE EN LATON
CHROME ► VALVULA DE ESCUADRA CON ROSETA EN LATON CROMADO

<u>SIZE</u>	<u>PACKING</u>
1/2"x1/2"	250
1/2"x3/4"	250



490

RUBINETTO A SFERA A 3 VIE, SOTTOLAVABO PER ATTACCO LAVATRICE ▶ 3 WAYS WASHING MACHINE BALL VALVE ▶ ROBINET A 3 VOIES, SOUS LAVABO POUR MACHINE A LAVER ▶ VALVULA 3 VIAS, BAJO LAVABO PARA MAQUINA LAVADORA



SIZE
1/2" Mx1/2" Fx3/4" M

PACKING
100

495

RUBINETTO SOTTOLAVABO A SFERA CON ROSONE ▶ ANGLE STOP VALVE WITH ROSETTE ▶ ROBINET SOUS LAVABO AVEC ROSETTE ▶ VALVULA DE ESCLADRA CON ROSETA



SIZE
1/2"x10

PACKING
100

470

RUBINETTO A 3 VIE, SOTTOLAVABO PER ATTACCO LAVATRICE ▶ 3 WAYS WASHING MACHINE BIBCOCK ▶ ROBINET A 3 VOIES, SOUS LAVABO POUR MACHINE A LAVER ▶ VALVULA 3 VIAS, BAJO LAVABO PARA MAQUINA LAVADORA



SIZE
1/2"x3/4"

PACKING
100

480

DISTANZIATORE PER GRUPPI, CON RUBINETTO LAVATRICE ▶ WASHING MACHINE BIBCOCK WITH CONNECTION ▶ ROBINET POUR MACHINE A LAVER AVEC RACCORD ▶ VALVULA PARA MAQUINA LAVADORA CON CONEXION



SIZE
3/4"x3/4"x3/4"

PACKING
100

485

RACCORDO CURVO 90° PER MONOFORO IN OTTONE STAMPATO ▶ STAMPED BRASS 90° ANGLE PIPE CONNECTOR FOR SINGLE-HOLE MIXER ▶ COURBE 90° EN LAITON MATRICE POUR ROBINET MONOTROU ▶ CODO 90° LATÓN ESTAMPADO PARA MONOFORO



SIZE
1/2"x3/8"

PACKING
50

EB100

RUBINETTO FISSO PER LAVELLO ▶ FIXED TAP FOR SINK ROBINET FIXE POUR ÉVIER ▶ GRIFO FREGADERO FIJO



SIZE
1/2"

PACKING
10

EB200

RUBINETTO DOPPIO CON ATTACCO LAVATRICE ▶ DOUBLE SINK TAP WITH UNION FOR WASHING MACHINE ▶ ROBINET DOUBLE AVEC FILETAGE POUR MACHINE À LAVER ▶ GRIFO LAVADORA DOBLE



SIZE
1/2"x3/4"

PACKING
10

EB300

RUBINETTO A SNODO CON ATTACCO LAVATRICE ▶ WASHING MACHINE BIBCOCK WITH SWIVEL SPOUT ▶ ROBINET AVEC FILETAGE POUR MACHINE À LAVER ET BEC ORIENTABLE ▶ GRIFO GIRATORIO CON CONEXIÓN PARA LAVADORA



SIZE
1/2"

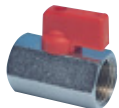
PACKING
10

Valves

MINI VALVOLE A SFERA ► MINI BALL VALVES
MINI VANNES A BOISSEAU SPHERIQUE ► MINI VALVULAS E SFERA

400

MINI VALVOLA FEMMINA/FEMMINA ► MINI VALVE FEMALE/FEMALE
MINI VANNES FEMELLE/FEMELLE ► MINI VALVULA HEMBRA/HEMBRA



SIZE	PACKING
1/8"	500
1/4"	500
3/8"	500
1/2"	400
3/4"	200

405

MINI VALVOLA MASCHIO/FEMMINA ► MINI VALVE MALE/FEMALE
MINI VANNES MALE/FEMELLE ► MINI VALVULA MACHO/HEMBRA



SIZE	PACKING
1/8"x6	500
1/4"x8	500
3/8"x10	500
1/2"x12	400
1/2"x15	400
1/2"x16	400
3/4"x18	200

410

MINI VALVOLAMASCHIO/MASCHIO ► MINI VALVE MALE/MALE
MINI VANNES MALE/MALE ► MINI VALVULA MACHO/MACHO



SIZE	PACKING
1/8"x6	500
1/4"x8	500
3/8"x10	500
1/2"x12	400
1/2"x15	400
1/2"x16	400

404

MINI VALVOLA FEMMINA/TUBO RAME CON DADO E OGIVA A STRINGERE
► MINI VALVE FEMALE/COPPER PIPE WITH COMPRESSION ENDS ► MINI
VANNES FEMELLE/TUYAU CUIVRE A COMPRESSION ► MINI VALVULA HEM-
BRA/TUBO COBRE A COMPRESSION



SIZE	PACKING
1/4"x8	400
3/8"x10	400
1/2"x12	250
1/2"x15	250
1/2"x16	250
3/4"x18	200

407

MINI VALVOLA ATTACCHI TUBO RAME CON DADO E OGIVA A STRINGERE ►
MINI VALVE COPPER PIPE WITH COMPRESSION ENDS ► MINI VANNES
CUIVRE/CUIVRE A COMPRESSION ► MINI VALVULA COBRE/COBRE A
COMPRESSION



SIZE	PACKING
8x8	400
10x10	400
12x12	250
15x15	250
16x16	250
18x18	200

406

MINI VALVOLA FEMMINA/TUBO RAME CON DADO E OGIVA A STRINGERE
► MINI VALVE FEMALE/COPPER PIPE WITH COMPRESSION ENDS ► MINI VANNES
FEMELLE/TUYAU CUIVRE A COMPRESSION ► MINI VALVULA HEMBRA/TUBO
COBRE A COMPRESSION



SIZE	PACKING
1/4"x8	400
3/8"x10	400
1/2"x12	250
1/2"x15	250
1/2"x16	250
3/4"x18	200

402

MINI VALVOLA MASCHIO/MASCHIO CON PERNO A TAGLIO CACCIAVITE
► MINI VALVE MALE/MALE WITH SCREWDRIVER SLOT ► MINI VANNES
MALE/MALE AVEC OUVERTURE TOURNEVIS ► MINI VALVULA
MACHO/MACHO CORTE DESTORNILLADOR



SIZE	PACKING
1/8"x6	500
1/4"x8	500
3/8"x10	500
1/2"x12	400
1/2"x15	400
1/2"x16	400

403

MINI VALVOLA ATTACCHI TUBO RAME CON DADO E OGIVA A STRINGERE
► MINI VALVE COPPER PIPE WITH COMPRESSION ENDS ► MINI VANNES
CUIVRE/CUIVRE A COMPRESSION ► MINI VALVULA COBRE/COBRE A COMPRES-
SION



SIZE	PACKING
8x8	400
10x10	400
12x12	250
15x15	250
16x16	250
18x18	200

ACCESSORI ▶ ACCESSORIES
ACCESOIRES ▶ ACCESORIOS

TFL1

TEFLON NORMALE, SPESSORE 0,08MM ▶ NORMAL TEFLON, THICKNESS 0,08MM
TEFLON NORMAL, EPAISSEUR 0,08MM ▶ TEFLÓN NORMAL, ESPESOR 0,08MM



SIZE 12mmx12mts
PACKING 100

TFL2

TEFLON GAS, SPESSORE 0,10MM ▶ TEFLON FOR GAS, THICKNESS 0,10MM
TEFLON GAS, EPAISSEUR 0,10MM ▶ TEFLÓN GAZ, ESPESOR 0,10MM



SIZE 12mmx12mts
PACKING 1000

TFL3

TEFLON GAS PROFESSIONALE, SPESSORE 0,20MM ▶ PROFESSIONAL GAS TEFLON,
THICKNESS 0,20MM ▶ TEFLON GAS PROFESSIONNEL, EPAISSEUR 0,20MM ▶
TEFLÓN GAZ PROFESIONAL, ESPESOR 0,20MM



SIZE 19mmx15mts
PACKING 100

TFL4

TEFLON LIQUIDO 50ML ▶ LIQUID TEFLON 50ML
TEFLON LIQUIDE 50ML ▶ TEFLÓN LIQUIDO 50ML



SIZE 50ml
PACKING 12

FLAX

CANAPA IN TRECCE 250GR ▶ COMBED FLAX IN STRIPS 250GR
CHANVRE TRESSE ▶ CAÑAMO TRENZADO



SIZE 1 kg.
PACKING 50 kgs.

GRN

PASTA VERDE 460GR ▶ GREEN PASTE 460GR
MASTIC VERT 460GR ▶ PASTA VERDE 460GR



SIZE
PACKING 60

Valves

FLANGE - VALVOLA A FARFALLA ► FLANGES - BUTTERFLY VALVES
BRIDES - VANNES PAPILLON ► BRIDAS - VALVULAS MARIPOSA

920

FLANGIA PIANA A SALDARE UNI 2278-67 ► FLAT FLANGE TO BE WELDED UNI 2278-67 ► BRIDE PLATE A SOUDER UNI 2278-67 ► BRIDA PLANA PARA SOLDAR UNI 2278-67



SIZE	DN	PN	N. of holes	PAKING
3/8"	10	16	4	1
1/2"	15	16	4	1
3/4"	20	16	4	1
1"	25	16	4	1
1.1/4"	32	16	4	1
1.1/2"	40	16	4	1
2"	50	16	4	1
2.1/2"	65	16	4	1
3"	80	16	8	1
4"	100	16	8	1
5"	125	16	8	1
6"	150	16	8	1
8"	200	16	12	1
10"	250	10	12	1
12"	300	10	12	1

925

FLANGIA FILETTATA UNI 2254-67 ► THREADED FLANGE UNI 2254-67
BRIDE FILETE UNI 2254-67 ► BRIDA FILETADA UNI 2254-67



SIZE	DN	PN	N. of holes	PAKING
3/8"	10	10-16	4	1
1/2"	15	10-16	4	1
3/4"	20	10-16	4	1
1"	25	10-16	4	1
1.1/4"	32	10-16	4	1
1.1/2"	40	10-16	4	1
2"	50	10-16	4	1
2.1/2"	65	10-16	4	1
3"	80	10-16	8	1
4"	100	10-16	8	1
5"	125	10-16	8	1
6"	150	10-16	8	1

930

VALVOLA A FARFALLA TIPO WAFER APERTURA A LEVA, LENTE IN GHISA SFEROIDALE, TENUTE IN EPDM ► BUTTERFLY VALVE "WAFER" TYPE LEVER-OPERATED OPENING, SPHEROIDAL CAST IRON LENS, EPDM SEALS ► VANNI PAPILLON TYPE "WAFER" OUVERTURE A LEVIER, LENTILLE EN FONTE SPHEROÏDALE, ETANCHEITES EN EPDM ► VALVULA MARIPOSA TIPO "WAFER" CON APERTURA A PALANCA, LENTE DE HIERRO FUNDIDO EN FORMA DE ESFERAS, CIERRE ESTANCO EN EPDM



SIZE	DN	PN	PAKING
2"	50	16	1
2.1/2"	65	16	1
3"	80	16	1
4"	100	16	1
5"	125	16	1
6"	150	16	1
8"	200	16	1
10"	250	10	1
12"	300	10	1

935

VALVOLA A FARFALLA TIPO WAFER APERTURA A LEVA, LENTE IN ACCIAIO INOX 316, TENUTE IN EPDM ► BUTTERFLY VALVE "WAFER" TYPE LEVER-OPERATED OPENING, STAINLESS STEEL 316 LENS, EPDM SEALS ► VANNI PAPILLON TYPE "WAFER" OUVERTURE A LEVIER, LENTILLE EN ACIER INOX 316, ETANCHEITES EN EPDM ► VALVULA MARIPOSA TIPO "WAFER" CON APERTURA A PALANCA, LENTE DE ACERO INOX 316, CIERRE ESTANCO EN EPDM



SIZE	DN	PN	PAKING
2"	50	16	1
2.1/2"	65	16	1
3"	80	16	1
4"	100	16	1
5"	125	16	1
6"	150	16	1
8"	200	16	1
10"	250	10	1
12"	300	10	1

940

VALVOLA A FARFALLA TIPO LUG APERTURA A LEVA, LENTE IN GHISA SFEROIDALE, TENUTE IN EPDM ► BUTTERFLY VALVE "LUG" TYPE LEVER-OPERATED OPENING, SPHEROIDAL CAST IRON LENS, EPDM SEALS ► VANNI PAPILLON TYPE "LUG" OUVERTURE A LEVIER, LENTILLE EN FONTE SPHEROÏDALE, ETANCHEITES EN EPDM ► VALVULA MARIPOSA TIPO "LUG" CON APERTURA A PALANCA, LENTE DE HIERRO FUNDIDO EN FORMA DE ESFERAS, CIERRE ESTANCO EN EPDM



SIZE	DN	PN	PAKING
2"	50	16	1
2.1/2"	65	16	1
3"	80	16	1
4"	100	16	1
5"	125	16	1
6"	150	16	1
8"	200	16	1
10"	250	10	1
12"	300	10	1

945

VALVOLA A FARFALLA TIPO LUG APERTURA A LEVA, LENTE IN ACCIAIO INOX 316, TENUTE IN EPDM ► BUTTERFLY VALVE "LUG" TYPE LEVER-OPERATED OPENING, STAINLESS STEEL 316 LENS, EPDM SEALS ► VANNI PAPILLON TYPE "LUG" OUVERTURE A LEVIER, LENTILLE EN ACIER INOX 316, ETANCHEITES EN EPDM ► VALVULA MARIPOSA TIPO "LUG" CON APERTURA A PALANCA, LENTE DE ACERO INOX 316, CIERRE ESTANCO EN EPDM



SIZE	DN	PN	PAKING
2"	50	16	1
2.1/2"	65	16	1
3"	80	16	1
4"	100	16	1
5"	125	16	1
6"	150	16	1
8"	200	16	1
10"	250	10	1
12"	300	10	1

RACCORDI IN OTTONE PER TUBO POLIETILENE PN 20 ► BRASS FITTINGS FOR POLYETHYLENE PIPE PN 20
 RACCORDS EN LAITON POUR TUYAU POLYETHYLENE PN 20 ► EMPALMES DE LATON PARA TUBO DE POLIETILENO PN 20

R1000

RACCORDO DRITTO MASCHIO ► STRAIGHT MALE COUPLER
 RACCORD DROIT MALE ► EMPALME RECTO MACHO



SIZE	PACKING
20x1/2"	400
25x1/2"	200
25x3/4"	200
32x3/4"	120
32x1"	120
40x1.1/4"	80
50x1.1/2"	60
63x2"	20
75x2" *	24
75x2.1/2" *	24
90x2.1/2" *	16
90x3" *	16
110x4" *	10

R1005

RACCORDO DRITTO FEMMINA ► STRAIGHT FEMALE COUPLER
 RACCORD DROIT FEMELLE ► EMPALME RECTO HEMBRA



SIZE	PACKING
20x1/2"	400
25x1/2"	200
25x3/4"	200
32x3/4"	120
32x1"	120
40x1.1/4"	80
50x1.1/2"	60
63x2"	20
75x2.1/2" *	24
90x3" *	16
110x4" *	10

R1010

MANICOTTO DI ACCOPIAMENTO ► CONNECTION COUPLER
 MANCHON D'ACCOUPEMENT ► MANGUITO DOBLE



SIZE	PACKING
20	200
25	150
32	80
40	40
50	30
63	20
75 *	16
90 *	12
110 *	8

R1020

RACCORDO A "T" FEMMINA ► FEMALE TEE COUPLER
 RACCORD TE FEMELLE ► EMPALME A "T" HEMBRA



SIZE	PACKING
20x1/2"	150
25x3/4"	80
32x1"	50
40x1.1/4"	30
50x1.1/2"	20
63x2"	10
75x2" *	8
90x2.1/2" *	6
110x4" *	2

R1025

RACCORDO A "T" UGUALE ► EQUAL TEE COUPLER
 RACCORD TE EGAL ► EMPALME A "T" IGUAL



SIZE	PACKING
20	150
25	80
32	50
40	30
50	10
63	10
75 *	4

R1030

RACCORDO A GOMITO MASCHIO ► MALE ELBOW
 RACCORD COUDE MALE ► CODO MACHO



SIZE	PACKING
20	250
25	150
32	100
40	50
50	30
63	20
75 *	12
90 *	6

R1035

RACCORDO A GOMITO FEMMINA ► FEMALE ELBOW
 RACCORD COUDE FEMELLE ► CODO HEMBRA



SIZE	PACKING
20	250
25	150
32	100
40	50
50	30
63	20
75 *	12
90 *	6
110 *	3

R1040

RACCORDO A GOMITO UGUALE ► CONNECTING ELBOW
 RACCORD COUDE EGAL ► CODO DOBLE IGUAL



SIZE	PACKING
20	150
25	120
32	70
40	30
50	20
63	10
75 *	8
90 *	4

Valves

VALVOLE A SFERA PER GAS ► BRASS BALL VALVES FOR GAS
ROBINETS A BOISSEAU SPHERIQUE POUR GAZ ► VALVULAS ESFERA PARA GAS

601

FEMMINA/FEMMINA LEVA ACCIAIO ► FEMALE/FEMALE STEEL HANDLE
FEMELLE/FEMELLE LEVIER EN ACIER ► HEMBRA/HEMBRA PALANCA ACERO



SIZE	PACKING
1/2"	140
3/4"	120
1"	60
1.1/4"	40
1.1/2"	20
2"	10
2.1/2"	12
3"	6
4"	3

602

FEMMINA/FEMMINA LEVA FARFALLA ► FEMALE/FEMALE "T" HANDLE
FEMELLE/FEMELLE LEVIER A "T" ► HEMBRA/HEMBRA PALANCA MARIPOSA



SIZE	PACKING
1/2"	200
3/4"	120
1"	60

603

MASCHIO/FEMMINA LEVA ACCIAIO ► MALE/FEMALE STEEL HANDLE
MALE/FEMELLE LEVIER EN ACIER ► MACHO/HEMBRA PALANCA ACERO



SIZE	PACKING
1/2"	140
3/4"	120
1"	60
1.1/4"	40
1.1/2"	20
2"	10

604

MASCHIO/FEMMINA LEVA FARFALLA ► MALE/FEMALE "T" HANDLE
MALE/FEMELLE LEVIER A "T" ► MACHO/HEMBRA PALANCA MARIPOSA



SIZE	PACKING
1/2"	200
3/4"	120
1"	60

606

FEMMINA/DADO GIREVOLE PIOMBABILE, LEVA FARFALLA ► FEMALE/SWIVEL NUT, "T" HANDLE ► FEMELLE/ECROU TOURNANT PLMBABILE, LEVIER A "T" ► HEMBRA/DADO MOVIL CON HUECO POR HILO DE SEGURIDAD, PALANCA MARIPOSA



SIZE	PACKING
1/2"x3/4"	100
3/4"x3/4"	100
3/4"x1"	80
1"x1"	50
1"x1.1/4"	30
1.1/4"x1.1/2"	20
1.1/2"x2"	10

607

MASCHIO/DADO GIREVOLE PIOMBABILE, LEVA FARFALLA ► MALE/SWIVEL NUT, "T" HANDLE ► MALE/ECROU TOURNANT PLMBABILE, LEVIER A "T" ► MACHO/DADO MOVIL CON HUECO POR HILO DE SEGURIDAD, PALANCA MARIPOSA



SIZE	PACKING
1/2"x3/4"	100
3/4"x3/4"	100
3/4"x1"	80
1"x1"	50
1"x1.1/4"	30
1.1/4"x1.1/2"	20
1.1/2"x2"	10

620

RUBINETTO A SQUADRA, MASCHIO/ATTACCO SCALDABAGNO ► ANGLE BALL VALVE, MALE/WATER-HEATER ► ROBINET EQUERRE, MALE/CHAUFFE-EAU ► VALVULA ANGULAR, MACHO/FIJACION CALENTADOR



SIZE	PACKING
1/2"x1/2"	250
1/2"x3/4"	250

670

RUBINETTO A SQUADRA, MASCHIO/MASCHIO ► ANGLE BALL VALVE, MALE/MALE
ROBINET EQUERRE, MALE/MALE ► VALVULA ANGULAR, MACHO/MACHO



SIZE	PACKING
1/2"	250

692

- RUBINETTO MASCHIO/MASCHIO PER FLESSIBILE GAS, CON SICUREZZA A SCATTO IN CHIUSURA
 ► ANGLE VALVE FOR GAS FLEXIBLE PIPE MALE/MALE, WITH AUTOMATIC SECURITY RELEASE
 ► ROBINET EQUERRE POUR TUYAU FLEXIBLE GAS MALE/MALE, AVEC DÉCLENCHEUR AUTOMATIQUE DE SÛRETÉ
 ► VALVULA ANGULAR POR TUBO FLEXIBLE GAS MACHO/MACHO, CON RESORTE DE SEGURIDAD



SIZE	PACKING
1/2"	150

698

- VALVOLA ANGOLO MASCHIO/DADO GIREVOLE, LEVA A FARFALLA ► ANGLE VALVE MALE/SWIVEL NUT, "T" HANDLE ► ROBINET EQUERRE MALE/ECROU TOURNANT, LEVIER A "T" ► VALVULA ANGULAR MACHO/DADO MOVIL, PALANCA MARIPOSA



SIZE	PACKING
1/2"x3/4"	150
3/4"x3/4"	80
3/4"x1"	60
1"x1"	40
1"x1.1/4"	20

699

- VALVOLA ANGOLO FEMMINA/DADO GIREVOLE, LEVA A FARFALLA ► ANGLE VALVE FEMALE/SWIVEL NUT, "T" HANDLE ► ROBINET EQUERRE FEMELLE/ECROU TOURNANT, LEVIER A "T" ► VALVULA ANGULAR HEMBRA/DADO MOVIL, PALANCA MARIPOSA



SIZE	PACKING
1/2"x3/4"	150
3/4"x3/4"	80
3/4"x1"	60
1"x1"	40
1"x1.1/4"	20

FXG1

- TUBO GAS UNI CIG RIVESTITO IN TRECCIA METALLICA, STRISCIA GIALLA ► GAS HOSE UNI CIG COVERED WITH METAL PLAIT, AND MARKED WITH YELLOW STRIP
 ► TUYAU GAZ UNI CIG REVETU D'UNE TRESSE METALLIQUE, BANDE JAUNE ► TUBO GAS UNI CIG REVESTIDO CON TRENZADO METÁLICO, TIRA AMARILLA



SIZE	PACKING
40 cm	50
50 cm	50
60 cm	50
80 cm	50
100 cm	50
120 cm	50
150 cm	50

FXG2

- TUBO ESTENSIBILE UNIGAS IN ACCIAIO INOX CON GUAINA TERMORETRAIBILE GIALLA ► UNIGAS STAINLESS STEEL EXTENSIBLE PIPE WITH YELLOW SHEATH ► TUYAU EXTENSIBLE UNIGAS EN INOX AVEC GAINÉ THERMO-RETRACTABLE JAUNE
 ► TUBO EXTENSIBLE UNIGAS INOXIDABLE CON FUNDA TERMORRETRACTIL AMARILLA



SIZE	PACKING
mm 500/1000	20

GG01

- GUAINA ESTENSIBILE/COMPRESSIBILE IN PP AUTOESTINGUENTE CLASSE "UL 94 V.O." A NORMA UNI-CIG 7129 PER RIVESTIMENTO TUBAZIONI ► EXTENSIBLE/COMPRESSIBLE PP SHEATH "UL 94 V.O." UNI-CIG 7129 RULES FOR PIPES ► GAINÉ EXTENSIBLE/COMPRESSIBLE EN PP ANTI-FEU CLASSE "UL 94" UNI-CIG 7129 NORMES POUR REVETEMENT TUYAUX ► FUNDA EXTENSIBLE/COMPRESSIBLE DE PP AUTOEXTINGUIBLE CLASE "UL 94" UNI-CIG 7129 NORMAS PARA REVESTIMIENTO TUBOS



SIZE	PACKING
20 mm	50 mts
25 mm	25 mts
32 mm	25 mts
40 mm	25 mts

GG02

- GUAINA FLESSIBILE SPIRALATA IN MATERIALE PLASTICO AUTOESTINGUENTE CLASSE "UL 94 V.O." ► FLEXIBLE SPIRALED SHEATH "UL 94 V.O." IN PLASTIC MATERIAL ► GAINÉ FLEXIBLE AVEC SPIRES EN MATERIEL PLASTIQUE ANTI-FEU CLASSE "UL 94" ► FUNDA FLEXIBLE EN FORMA DE ESPIRAL DE MATERIAL PLASTICO AUTOEXTINGUIBLE CLASE "UL 94"



SIZE	PACKING
20 mm	25 mts
25 mm	25 mts
32 mm	25 mts
40 mm	25 mts
50 mm	25 mts

GG03

- TUBO GAS LIQUIDO IN PVC CON INSERZIONE TESSILE A NORMA UNI-CIG E IMQ ► PVC TUBE FOR LIQUID GAS UNI-CIG AND IMQ RULES ► TUYAU GAZ LIQUIDE EN PVC AVEC INSERTION TEXTILE AUX NORMES UNI-CIG E IMQ ► TUBO DE GAS LIQUIDO DE PVC CON INSERCIÓN TEXTIL SEGÚN NORMA UNI-CIG E IMQ



SIZE	PACKING
ø13x8mm	50 mts